



LOOK FABULOUS

WIGS AND EXTENSIONS® FROM  **TRESSALLURE**

VOLUME THREE

Shown: Trend
Color: 24/102/R12

LOOK FABULOUS

WIGS AND EXTENSIONS® FROM  TRESSALLURE

LOOK Fabulous aims to inspire women to recognize and use their beauty and strength to change the world, explore and experiment, be bold and glamorous and LOOK Fabulous. Our mission is to continually evolve and lead our industry with the most technologically advanced hair and styling products. And satisfy your expectations with diverse fashions, fibers, colors, construction techniques, comfort and service.

TressAllure® features two unique collections, LOOK Fabulous and Classic. Both collections are available with machine made stretch cool comfort caps, hand knotted ear to ear, deep lace fronts and parts, and double hand knotted mono tops with lace fronts.

The TressAllure® LOOK Fabulous collection is made with our proprietary all heat friendly style-able Effortless™ fibers.

The TressAllure® Classic Look collection is made with our blended 100% Modacrylic fibers.

Each collection has its own range of TressDimensional® colors, features, and benefits. And both collections feature realistic lifelike products that your clients will love and - you'll be proud to offer.

We take great pride in our products and take pleasure knowing that we are providing wig stylists a superior quality product that will meet you and your clients' expectations. Whether for fashion or hair loss, TressAllure® followers count on us for products that are realistic, undetectable, comfortable, and identifiable as the finest wigs in the world.

TressAllure Quality Assurance: TressAllure uses only the finest soft pliable cap materials and our effortless synthetic fiber for a product that will continue to look beautiful after multiple washings.

TressAllure After Care products are recommended for optimal results.

LOOK FABULOUS

WIGS AND EXTENSIONS® FROM  TRESSALLURE®

TABLE OF CONTENTS

Ashlyn	4
Razor Cut Shag	5
Angled Pixie	6
Brushed Pixie	6
Alexa	7
Charlotte	7
Flawless Waves	8
Angled Bob	9
Tapered Curls	9
Mia	10
Casual Curls	11
Modern Curls	11
Sleek and Straight	12
Blaze	13
Charlie	13
Soft Wave Bob	14
Soft Curls	14
Curl Intense	14
Shay	15
Sensational	16
Spectacular Shag	16
Trend	17
Picture Perfect	18
Sheer Joy	19
New Wave	20
California Beach Waves	21
TressDimensional® Colors	22
Styling and Care Products	23

Affordable Glamour

Ashlyn

Product Code: V1301

Color Shown: Silky Sand and Cocoa Bean

Cool Comfort Cap

100% Modacrylic Effortless™ Fiber

What is it?

Sweeping 16" layers and feathered bangs with our stretch Cool Comfort Cap is remarkably light and easy to style. Nothing says glamour more than a long, natural silhouette that is perfectly layered and enhanced with slight, soft waves. Subtle but distinct drama makes Ashlyn a "model perfect" style.

Why is it different?

TressAllure's proprietary Cool Comfort Cap construction is open-wefted for air flow. It memorizes and molds itself to the contours of your head for all day and night comfort.

Proprietary special pre-teased synthetic 100% Modacrylic Effortless™ fiber allows for the wig to be completely shake and wear with versatility to brush smooth or fuller at the top. A perfect style for instant length and volume.

- Hair Length: 16½"
- Fringe: 7½"
- Crown: 16½"
- Nape: 16½"
- Cap Size: 21¼"
- Weight: 2.3 oz.

Available Tone-On-Tone TressDimensional® Colors.

See page 22 for color swatches.

CHAMPAGNE	HONEY BEAN	SUNSET GLOW
CHOCOLATE SWIRL	COLA SWIRL	SHEER PLUM
COCOA BEAN	MOCHA GOLD	SUGAR BRULEE
MIDNIGHT COFFEE	MISTY SUNRISE	DARK AMBER HL
PECAN TWIST	FROSTY BLONDE	MIMOSA HL
SATIN GOLD	VELVET CREAM	CHIFFON CANDY
DEEP FOREST	PRINCESS IVORY	SILKY SAND
WALNUT BROWN	DEEP SEPIA	DARK SMOKE GREY
ENGLISH TEA HL	CHERRYWOOD HL	



Bold

Razor Cut Shag

Product Code: VC1204

Color Shown: 24/102/12R and 829

Cool Comfort Cap

Heat Friendly Style-Able

Effortless™ Fiber

What is it?

A mid-length piecey shag with razor cut layers and our Cool Comfort Cap. Special pre-teased roots lift without any of the bulk.

Why is it different?

This mid-length style is incredibly light with a layered top and tousled volume at the sides and back.

- Hair Length: 3"-5½" • Nape: 4½"
- Fringe: 3"-4" • Cap Size: 21½"
- Crown: 4"-5½" • Weight: 2.85 oz.



Synthetic hair
that is smooth,
silky and gorgeous?

Absolutely!



Available Tone-On-Tone TressDimensional® Colors.

See page 22 for color swatches.

COLOR CODES

1	12R	17/23/R8	38/51/60
1B/BURG	27/30/33H	24/102/R12	44/56/60
2/4R	32/31	52/38/49/R8	60R
4/6R	33/30	56/60/R8	1001
6/28	33R	22R	27/25/88
747T	10/130R	24/18T	613/1001/R18
8R	33/32/R4	223/23C	
829	33/130/R4	23R	
10R	14/26/R10	88	

Smart

Angled Pixie

Product Code: VC1202

Color Shown: 14/26/R10

Cool Comfort Cap

Heat Friendly Style-Able Effortless™ Fiber

What is it?

An asymmetric side swept pixie with feathered texture and volume. Long enough to brush behind or over the ears.

Why is it different?

The Angled Pixie features TressAllure's® Cool Comfort Cap for all day comfort and feathered wispy hair that frames the face. A perfect look for everyone!

- Hair Length: 2½"-7"
- Fringe: left side 4¼"-7"
- Crown: 4 ¼"-6"
- Nape: 2½"
- Cap Size: 21½"
- Weight: 2.5 oz.



Available Tone-On-Tone TressDimensional® Colors.

See page 22 for color swatches.

COLOR CODES

1B/BURG	829	14/26/R10	88
2/4R	10R	24/102/R12	38/51/60
4/6R	12R	22R	44/56/60
6/28	27/30/33H	24/18T	60R
747T	32/31	223/23C	1001
8R	10/130R	23R	

Savvy

Brushed Pixie

Product Code: VC1201

Color Shown: 23R

Cool Comfort Cap

Heat Friendly Style-Able Effortless™ Fiber

What is it?

A high energy cropped haircut with a smooth wave that frames the face with bangs volume on top and our Cool Comfort Cap for every day, all day comfort.

Why is it different?

It's incredibly lightweight, easy to wear, and Style-Able.

- Hair Length: 1¼"-3½"
- Fringe: 3½"
- Crown: 3"
- Nape: 1¾"
- Cap Size: 21½"
- Weight: 2.5 oz.



Available Tone-On-Tone TressDimensional® Colors.

See page 22 for color swatches.

COLOR CODES

1B/BURG	10R	24/102/R12	38/51/60
2/4R	12R	56/60/R8	44/56/60
4/6R	27/30/33H	22R	60R
6/28	32/31	24/18T	1001
747T	33R	223/23C	
8R	10/130R	23R	
829	14/26/R10	88	



Soft & Subtle

Alexa

Product Code: V1309

Color Shown: Honey Bean

Cool Comfort Cap

100% Modacrylic
Effortless™ fiber

What is it?

A high fashion versatile style with a side-swept fringe and disconnected wispy layers.



Why is it different?

TressAllure's® proprietary Cool Comfort Cap construction is open-wefted for air flow. It memorizes and molds itself to the contours of your head for all day and night comfort. Perfect for first time wearers who want a great new look, TressAllure's Classic Look special pre-teased synthetic 100% Modacrylic Effortless™ fiber allows for a light sheen and the wig to be completely shake and wear. DO NOT APPLY HEAT.



- Hair Length: 4"-6"
- Fringe: 5"
- Crown: 6"
- Nape: 4"
- Cap Size: 21¼"
- Weight: 2.8 oz.

Available Tone-On-Tone TressDimensional® Colors.

See page 22 for color swatches.

COLOR CODES

AMBER HL	VELVET CREAM	MOCHA GOLD	SUNSET GLOW
CHERRYWOOD	DARK SMOKE GREY	SHEER PLUM	ENGLISH TEA
CHIFFON CANDY	HONEY BEAN	SILKY SAND	WALNUT BROWN
COCOA BEAN	PRINCESS IVORY	SATIN GOLD	DEEP FOREST
MIDNIGHT COFFEE	MIMOSA HL	DEEP SEPIA	FROSTY BLONDE
COLA SWIRL	MISTY SUNRISE	SUGAR BRULEE	

Sassy Charlotte

Product Code: V1313

Color Shown: Cola Swirl

Cool Comfort Cap

100% Modacrylic
Effortless™ fiber

What is it?

The quintessential textured bob. This effortless style and tousled finish features a breathable open-wefted Cool Comfort Cap wispy layers with soft curls throughout the crown and back, subtle lift at the root for added volume without any bulk or weight, and carefree movement. A very best seller.



Why is it different?

TressAllure's proprietary Cool Comfort Cap features open-weft vents for airflow. It memorizes and molds itself to the contours of your head for all-day, all-night comfort. Our proprietary special pre-teased synthetic 100% Modacrylic Effortless™ fiber allows for the wig to be completely shake and wear. The perfect style for anytime wear.

- Fringe: 6½"
- Crown: 6 ½"
- Nape: 3"
- Cap Size: 21¼"
- Weight: 2.5 oz.



Available Tone-On-Tone TressDimensional® Colors.

See page 22 for color swatches.

COLOR CODES

DEEP FOREST	DEEP SEPIA	CHAMPAGNE
WALNUT BROWN	CHERRYWOOD HL	CHOCOLATE SWIRL
ENGLISH TEA HL	SUNSET GLOW	COCOA BEAN
HONEY BEAN	SHEER PLUM	MIDNIGHT COFFEE
COLA SWIRL	SUGAR BRULEE	SATIN GOLD
PECAN TWIST	DARKAMBER HL	
MOCHA GOLD	MIMOSA HL	
MISTY SUNRISE	CHIFFON CANDY	
FROSTY BLONDE HL	SILKY SAND	
VELVET CREAM	SILVER SHADOW	
PRINCESS IVORY	DARK SMOKE GREY	



Trendy

Flawless Waves

Product Code: VC1208

Color Shown: 17/23/R8

Cool Comfort Cap

Heat Friendly Style-Able Effortless™ Fiber

What is it?

Mid-length layers of beachy waves, feathered bangs, a smooth silky top, and a bob back that falls below the collar. Featuring a Cool Comfort Cap designed to mold itself and memorize the contours of your head for all day, every day comfort.

Why is it different?

Blended multi-textures and contoured layering gives you a lot of volume without any bulk for an incredible lightweight feel. The wavy sides perfectly frame and narrow the face.

- Hair Length: 3½"-7½"
- Crown: 5 ½"
- Fringe: 3¼"
- Nape: 6"
- Cap Size: 21½"
- Weight: 3.5 oz.



Available Tone-On-Tone TressDimensional® Colors.

See page 22 for color swatches.

COLOR CODES

1B/BURG	613/1001/R18	33R
2/4R	17/23/R8	33/30
4/6R	22R	33/32/R4
747T	223/23C	38/51/60
8R	23R	44/56/60
829	24/102/R12	52/38/49/R8
10R	24/18T	56/60/R8
10/130R	27/30/33H	60R
12R	27/25/88	88
1001	32/31	
14/26/R10	33/130/R4	



Undetectable Lace Front

Angled Bob

Product Code: FC1601

Color Shown: 1B/BURG and 10/130

Lace Front Cap

Heat Friendly Style-Able Effortless™ Fiber

What is it?

Silky, gorgeous synthetic Style-Able Effortless™ fiber with a lightly texturized side-swept front, bob back, and slightly asymmetric sides that frame and narrow the face.

Why is it different?

The hand knotted pretrimmed lace front creates an undetectable hairline that looks like hair is growing out of your scalp.

- Hair Length: 2"-7½"
- Fringe: 5½"-7½"
- Crown: 6½"-7½"
- Nape: 2"
- Cap Size: 21½"
- Weight: 3.17 oz.



Available Tone-On-Tone TressDimensional® Colors.

See page 22 for color swatches.

COLOR CODES

1	10R	22R	1001
1B/BURG	12R	24/18T	17/23/R8
2/4R	27/30/33H	223/23C	27/25/88
4/6R	32/31	23R	33/130/R4
6/28	33R	88	52/38/49/R8
747T	10/130R	38/51/60	56/60/R8
8R	14/26/R10	44/56/60	613/1001/R18
829	24/102/R12	60R	

Confident Tapered Curls

Product Code: FC1602

Color Shown: 1001

Lace Front Cap

Heat Friendly Style-Able Effortless™ Fiber

What is it?

Romantic full volume all over light curls that taper at the nape. Our Lace Front cap delivers an undetectable hairline and provides cool, easy all day comfort.

Why is it different?

The magical undetectable hairline looks and acts completely natural and versatile.

- Hair Length: 3"-6"
- Fringe: 4½"-6"
- Crown: 4½"-6"
- Nape: 3"
- Cap Size: 21½"
- Weight: 2.64 oz.



Available Tone-On-Tone TressDimensional® Colors.

See page 22 for color swatches.

COLOR CODES

1B/BURG	12R	24/18T
2/4R	27/30/33H	223/23C
4/6R	32/31	23R
6/28	33/30	88
747T	10/130R	38/51/60
8R	14/26/R10	44/56/60
829	24/102/R12	1001
10R	22R	



Wistful

Mia

Product Code: LP1908

Colors Shown: Sugar Brulee and Silky Sand

Sheer Lace Front Lace Part Cap

100% Modacrylic Effortless™ Fiber

What is it?

Glamorous, mid-length, layered, beachy waves fall below the shoulders with natural body movement. A smooth top and undetectable hairline and side part.

Why is it different?

TressAllure's double knotted soft lace front and lace side part for an undetectable, natural hair line is truly remarkable. And TressAllure's proprietary pre-teased Effortless 100% modacrylic Synthetic Fiber™ is super light and shake and wear, with versatility to brush smooth or fuller at the top. Incredible, a wig this full can weigh only slightly over 2 ounces.

- Fringe: 8"
- Crown: 11"
- Nape: 8½"
- Cap Size: 21¼"
- Weight: 2.4 oz.



Available Tone-On-Tone TressDimensional® Colors.

See page 22 for color swatches.

COLOR CODES

MIDNIGHT COFFEE	SUNSET GLOW
COCOA BEAN	SHEER PLUM
WALNUT BROWN	SUGAR BRULEE
ENGLISH TEA HL	DARK AMBER HL
HONEY BEAN	CHIFFON CANDY
CHOCOLATE SWIRL	SILKY SAND
PECAN TWIST	DARK SMOKE GREY
MOCHA GOLD	VELVET CREAM
FROSTY BLONDE HL	PRINCESS IVORY
CHAMPAGNE	MIMOSA

Playful



Casual Curls

Product Code: LPC1801

Colors Shown: 24/102/R12

Sheer Lace Front Lace Part Cap

Heat Friendly Style-Able Effortless™ Fiber

What is it?

Shoulder length soft curls with loads of volume, a smooth wave top, and hand knotted deep lace front that can be brushed back off the face or parted for an undetectable hairline.

Why is it different?

Our unique Sheer Lace Front Lace Part cap is specially crafted so the hair appears to be growing right out of your scalp and hairline. Hand layering allows for a low density of hair but full of volume without any bulk or weight usually associated with wigs.

- Overall: 5½" - 7½"
- Fringe: 5" - 6"
- Crown: 6½" - 7½"
- Nape: 7½"
- Cap Size: 21½"
- Weight: 4.15 oz.

Available Tone-On-Tone TressDimensional® Colors.

See page 22 for color swatches.

COLOR CODES

1	10R	24/18T	33/32/R4
1B/BURG	12R	24/102/R12	60R
2/4R	14/26/R10	1001	88
4/6R	17/23/R8	10/130R	44/56/60
6/28	613/1001/R18	27/25/88	52/38/49/R8
747T	22R	27/30/33H	33/130/R4
8R	223/23C	32/31	38/51/60
829	23R	33/30	56/60/R8

So light...so quick...
and oh so pretty

Modern Curls

Product Code: VC1203

Color Shown: 24/18T

Cool Comfort Cap

Heat Friendly Style-Able

Effortless™ Fiber

What is it?

Romantic full body curls without any of the weight or bulk. Easy to wear as defined curls or brush into flowing waves that taper at the nape.

Why is it different?

Pliable curls frame or brush back off the face.

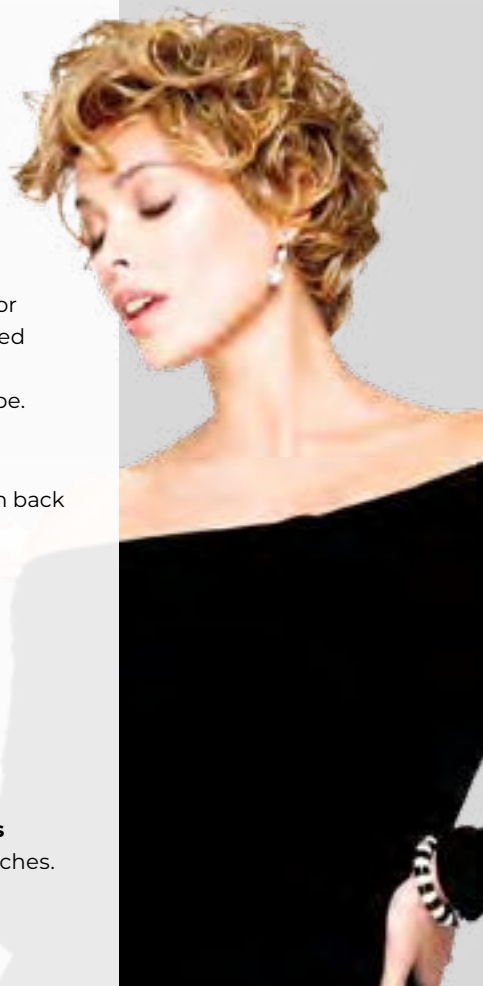
- Hair Length: 3"-6"
- Fringe: 3"
- Crown: 4½"-6"
- Nape: 3"
- Cap Size: 21½"
- Weight: 2.6 oz.

Available Tone-On-Tone TressDimensional® Colors

See page 22 for color swatches.

COLOR CODES

1	22R
1B/BURG	24/18T
2/4R	223/23C
4/6R	23R
6/28	88
747T	38/51/60
8R	44/56/60
829	60R
10R	1001
12R	27/25/88
27/30/33H	33/130/R4
32/31	52/38/49/R8
10/130R	613/1001/R18
14/26/R10	17/23/R10
24/102/R12	



Edgy

Sleek and Straight

Product Code: CC1101

Color Shown: 32/31

Sheer Comfort Mono Top/Lace Front Cap

Heat Friendly Style-Able Effortless™ Fiber

What is it?

Sleek precision cut layers fall below the shoulder with feathery blunt cut bangs. Circular knotting, a monofilament mesh crown, and our cool comfort stretch and our Cool Comfort cap top off this extraordinarily light, natural looking stunning style. Made from TressAllure's® own heat friendly Style-Able Effortless™ synthetic fiber developed to match the same thickness and weight as fine human hair.

Why is it different?

It's incredibly lightweight, easy to wear, has precision layering, and a perfect crown.

- Hair Length: 3½"-16½"
- Bangs: 3½"
- Layered from crown: 11"-16½"
- Cap Size: 21½"
- Weight: 4.23 oz.



Available Tone-On-Tone TressDimensional® Colors.

See page 22 for color swatches.

COLOR CODES

1	12R	22R	17/23/R8
1B/BURG	27/30/33H	24/18T	27/25/88
2/4R	32/31	223/23C	33/130/R4
4/6R	10/130R	23R	52/38/49/R8
8R	33/32/R4	88	56/60/R8
829	14/26/R10	60R	
10R	24/102/R12	1001	



Magnificent Blaze

Product Code: F1704

Color Shown: Dark Amber

Sheer Comfort Mono Top/
Lace Front

100% Modacrylic
Effortless™ Fiber



What is it?

Sexy long light layers of ready-to-wear hair that falls below the shoulder with a Sheer Comfort Mono Top/Lace Front base design providing an undetectable hairline and a perfect fit. So comfortable you'll forget you're wearing a wig.

Why is it different?

Our synthetic 100% Modacrylic Effortless™ fiber looks like and feels like fine human hair, but it's lighter and ready to wear. Special double knotting by hand and sheer ear-to-ear lace front allows a variety of styling options. Part Blaze in the center, brush back off the face, or even pull it back into a long sleek pony. The undetectable hairline looks like hair is growing right out of your scalp.

- Hair Length: Overall Layers Wear Like 22"
- Front: 10"
- Crown: 15¼"
- Nape: 15"
- Sides: 15¼"
- Cap Size: 21½"
- Weight: 5.1 oz.



Available Tone-On-Tone TressDimensional® Colors.

See page 22 for color swatches.

COLOR CODES

CHOC SWIRL	VELVET CREAM	CHERRYWOOD HL
COCOA BEAN	SILKY SAND	SHEER PLUM
ENGLISH TEA HL	FROSTY BLONDE HL	SILVER SHADOW
HONEY BEAN	PRINCESS IVORY	DARK SMOKE GREY
SUGAR BRULEE	MOCHA GOLD	WALNUT BROWN
DARK AMBER HL	MIMOSA HL	
CHIFFON CANDY	SUNSET GLOW	

Dream Hair And It's All Yours

Charlie

Product Code: F1705

Color Shown: Princess Ivory

Sheer Comfort Mono Top/Lace Front Cap

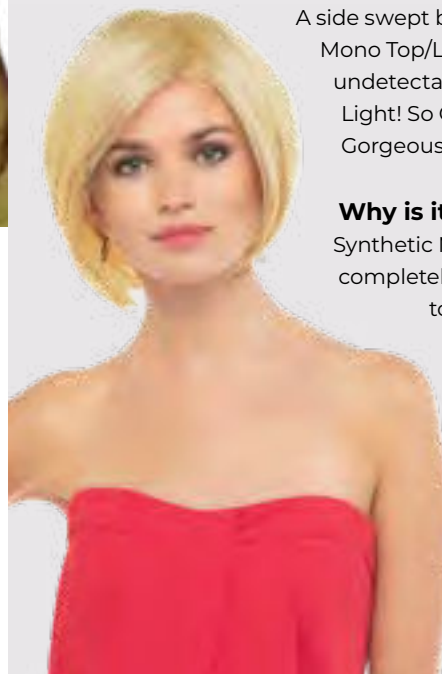
100% Modacrylic Effortless™ Fiber

What is it?

A side swept bob with a Sheer Comfort Mono Top/Lace Front cap delivers an undetectable hairline and perfect fit. So Light! So Comfortable! So Easy! And So Gorgeously You.

Why is it different?

Synthetic Modacrylic Effortless™ Fiber is completely shake and wear but versatile to be worn smooth, fuller, or even wind-blown. Special double hand knotting allows you to part Charlie anywhere and brush it in any direction. Side swept bangs or a center part; no problem! Back off the face; no problem! The ear-to-ear lace front looks like the hair is growing right out of your scalp!



- Hair Length Overall: 10¾"
- Front: 7"
- Crown: 10¼"
- Sides: 10¼"
- Nape: 3½"
- Cap Size: 21½"
- Weight: 3.67 oz.

Available Tone-On-Tone TressDimensional® Colors

See page 22 for color swatches.

COLOR CODES

CHOC SWIRL	VELVET CREAM	CHERRYWOOD HL
COCOA BEAN	SILKY SAND	SHEER PLUM
ENGLISH TEA HL	FROSTY BLONDE HL	SILVER SHADOW
HONEY BEAN	PRINCESS IVORY	DARK SMOKE GREY
SUGAR BRULEE	MOCHA GOLD	WALNUT BROWN
DARK AMBER HL	MIMOSA HL	
CHIFFON CANDY	SUNSET GLOW	

Lush Waves & Curls

Soft Wave Bob



Product Code: MC1408

Color Shown: 12R

Sheer Comfort Mono Top/Lace Front Cap

Heat Friendly Style-Able Effortless™ Fiber

What is it?

The Sheer Comfort Mono Top/Lace Front cap has a double hand-knotted soft monofilament mesh cap and an ear-to-ear lace front for an undetectable hairline. A mid-length bob with soft waves, specially tapered and pre-teased roots that give lift without any of the bulk or weight.

Why is it different?

This mid-length style is incredibly light and versatile. Style with piecey bangs, off the face, or even side to side!

- Length: 4"-5"
- Nape: 4"
- Fringe: 4"
- Cap Size: 21½"
- Crown 5"
- Weight: 2.4 oz.

Available Tone-On-Tone TressDimensional® Colors.

See page 22 for color swatches.

COLOR CODES

1	10R	14/26/R10	38/51/60
1B/BURG	12R	24/102/R12	44/56/60
2/4R	27/30/33H	22R	60R
4/6R	32/31	24/18T	1001
747T	33/30	223/23C	
8R	33R	23R	
829	10/130R	88	

Soft Curls



Product Code: MC1409

Color Shown: 14/26/R10

Sheer Comfort Mono Top/Lace Front Cap

Heat Friendly Style-Able Effortless™ Fiber

What is it?

Dreamy lightweight full body curls with a Sheer Comfort Mono Top/Lace Front cap designed with a double hand smooth monofilament top and a lace front that provides an undetectable hairline for an all day, every day comfort.

Why is it different?

Super lightweight comfort and versatile style lets you part your curls anywhere or brush them back off your face.

- Length: 4"-6½"
- Nape: 4"
- Fringe: 5½"
- Cap Size: 21½"
- Crown: 6½"
- Weight: 3 oz.

Available Tone-On-Tone TressDimensional® Colors.

See page 22 for color swatches.

COLOR CODES

2/4R	12R	22R	44/56/60
4/6R	33R	223/23C	60R
8R	10/130R	23R	
829	14/26/R10	88	
10R	24/102/R12	38/51/60	

Curl Intense



Product Code: MC1404

Color Shown: 23R

Sheer Comfort Mono Top/Lace Front Cap

Heat Friendly Style-Able Effortless™ Fiber

What is it?

A gorgeous mid-length bob with a soft wave front and light voluptuous bouncy "S" curls that fall gently below the collar.

Why is it different?

It's incredibly lightweight! A double hand knotted, ultra-sheer monofilament top and lace front that provides for an undetectable hairline that can be parted anywhere. Wear with full bouncy curls or light waves for lots of natural movement.

- Length: 3½"-10"
- Nape: 8"
- Bangs: 3½"
- Cap Size: 21½"
- Crown: 8"-10"
- Weight: 4.12 oz.

Available Tone-On-Tone TressDimensional® Colors.

See page 22 for color swatches.

COLOR CODES

1	829	10/130R	23R
1B/BURG	10R	14/26/R10	88
2/4R	12R	24/102/R12	38/51/60
4/6R	27/30/33H	22R	44/56/60
747T	32/31	24/18T	60R
8R	33/30	223/23C	1001

Delight

Shay

Product Code: F1706

Color Shown: Dark Amber, Sugar Brulee

Sheer Comfort Mono Top/Lace Front Cap

100% Modacrylic Effortless™ Fiber

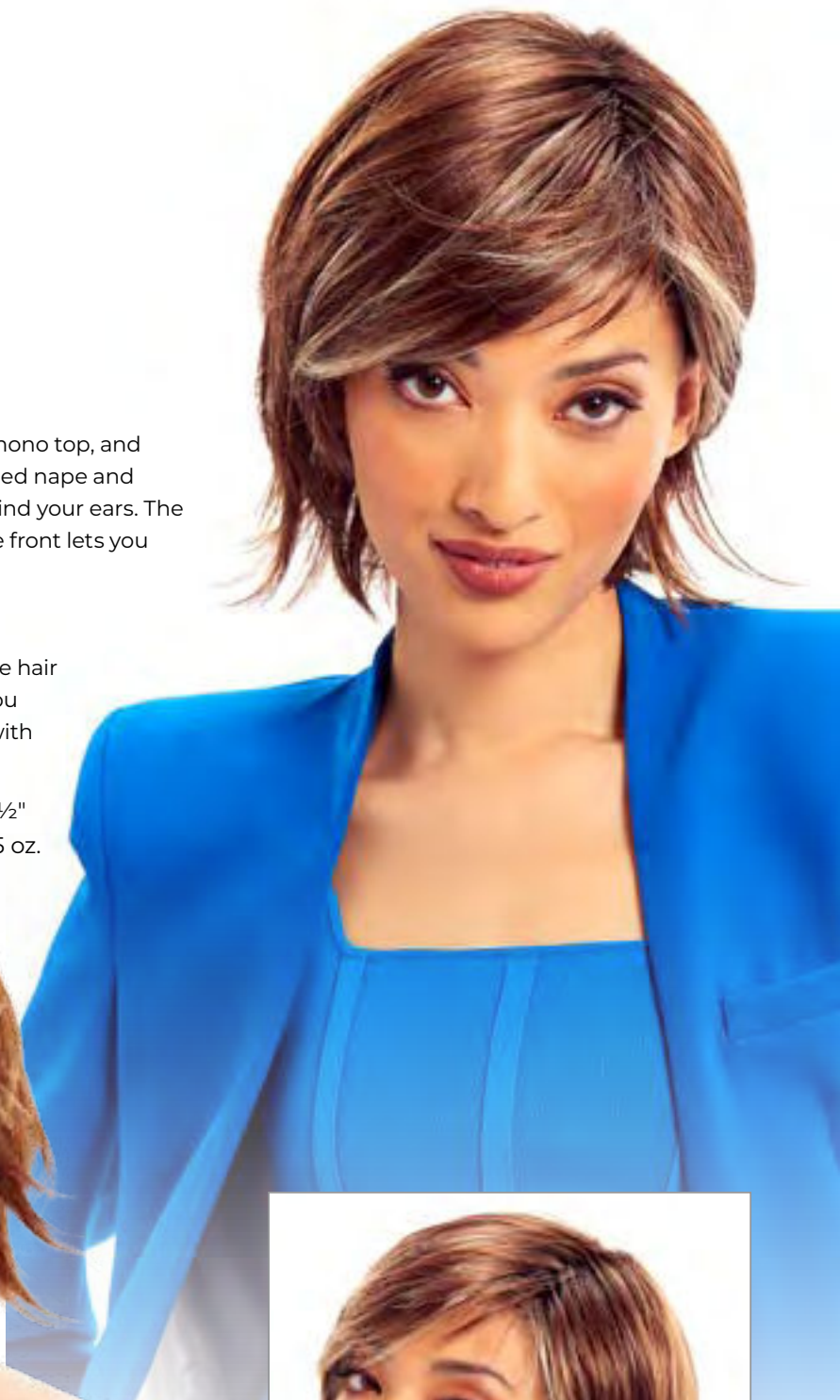
What is it?

A low density stylish pixie cut shag with a hand knotted mono top, and extended lace front. This wispy shag has a modish extended nape and enough length on the sides to frame the face or tuck behind your ears. The hand-knotted undetectable mono top and ear-to-ear lace front lets you part the hair in any direction or pull back off your face.

Why is it different?

Special hand-knotting at the top and hairline looks like the hair is growing right out of your scalp. Feathered layers give you a high-style shag without the weight usually associated with other wigs.

- Hair Length Overall: 4"-7"
- Fringe: 4"-5½"
- Nape: 4"
- Cap Size: 21½"
- Weight: 2.75 oz.



Available Tone-On-Tone TressDimensional® Colors.

See page 22 for color swatches.

COLOR CODES

CHOCOLATE SWIRL	PECAN TWIST	VELVET CREAM	MISTY SUNRISE	SILVER SHADOW
MIDNIGHT COFFEE	HONEY BEAN	SILKY SAND	MIMOSA HL	DARK SMOKE GREY
COCOA BEAN	SUGAR BRULEE	SATIN GOLD	SUNSET GLOW	COLA SWIRL
ENGLISH TEA HL	DARK AMBER HL	FROSTY BLONDE HL	DEEP SEPIA	
DEEP FOREST	CHAMPAGNE	PRINCESS IVORY	CHERRYWOOD HL	
WALNUT BROWN	CHIFFON CANDY	MOCHA GOLD	SHEER PLUM	

Dynamic

Sensational

Product Code: MC1407

Color Shown: 22R and 2/4

Sheer Comfort Mono
Top/Lace Front Cap

Heat Friendly Style-Able
Effortless™ Fiber



What is it?

Sensational part-anywhere face-framing bangs graduate into feathered layers that fall to the mid-back. The Sheer Comfort Mono Top/Lace Front cap has a double hand-knotted soft monofilament mesh cap and an ear-to-ear and lace front that provides for an undetectable hairline. Sensational provides styling versatility allowing the Style-Able Effortless™ synthetic fibers to be brushed back off the face, side to side, or even fashioned into a ponytail. Sensational is designed to be the most comfortable wig in the world.

Why is it different?

Sensational is incredibly lightweight and easy to wear. Made with our heat friendly Style-Able Effortless™ synthetic fiber, it matches the density of fine human hair but lighter.

- Hair Length: 8"-22"
- Bangs: layered 8"-11"
- Crown to Sides: Layered 15"-22"
- Nape: 15"
- Cap Size: 21½"
- Weight: 6.17 oz.

Available Tone-On-Tone TressDimensional® Colors.

See page 22 for color swatches.

COLOR CODES

1	27/30/33H	24/18T
1B/BURG	32/31	223/23C
2/4R	33/30	23R
4/6R	33R	17/23/R8
747T	10/130R	27/25/88
8R	14/26/R10	33/130/R4
10R	24/102/R12	52/38/49/R8
12R	22R	613/1001/R18

Breathtaking

Spectacular Shag

Product Code: MC1411

Colors Shown: 33/130/R4
and 829

Sheer Comfort Mono Top/
Lace Front Cap

Heat Friendly Style-Able
Effortless™ Fiber



What is it?

A bi-level tousled shag falls below the shoulder with double knotted roots that add lift or brushes smooth with just a shake or flick of the brush. Features a Sheer Comfort Mono Top/Lace Front cap for an ultra-comfort low density weight and comfort.

Why is it different?

Style-Able Effortless™ Fiber is a proprietary blend of synthetic fibers that perfectly replicate the density, feel and look of fine Human hair that can be straightened or curled, is individually hand knotted into a fine soft monofilament lace mesh for an undetectable hairline the ultimate in wig wearing comfort and layered to customize for your client.

- Hair Length: 3" - 9"
Layered for an overall 22"
of hair length
- Cap Size: 21½"
- Weight: 4.6 oz.



Available Tone-On-Tone TressDimensional® Colors.

See page 22 for color swatches.

COLOR CODES

1	829	22R	17/23/R8
1B/BURG	747T	223/23C	24/102/R12
10R	10/130R	23R	27/25/88
12R	27/30/33H	88	33/30
2/4R	32/31	52/38/49/R8	4456/60
24/18T	33R	56/60/R8	6/28
4/6R	33/32/R4	1001	60R
8R	33/130/R4	14/26/R10	613/1001/R18

Seamless Texture

Trend

Product Code: MC412

Colors Shown: 24/102/R12, 10/130, 1B/BURG and 56/60/R8

Sheer Comfort Mono Top/Lace Front Cap

Heat Friendly Style-Able Effortless™ Fiber

What is it?

Short textured layers of beach waves, silky feathered bangs, a smooth silky top, and bob back that falls above the collar. Featuring a Sheer Comfort Mono Top/Lace Front cap that is double hand knotted for weightless comfort. Ear to Ear feathered bangs brush in any direction or off the face for an undetectable hairline and part.

Why is it different?

Blended multi-textures and sculpted layering frame and narrows the face. Exquisite hand knotting gives you adjustable volume without any bulk for an incredible light-weight feel. And Style-Able Effortless™ Fiber lets you volumize, brush smooth or enhance your curls.

- Hair Length: 2½" - 9"
- Crown: 9"
- Fringe: 3¼"
- Nape: 2½"
- Cap Size: 21½"
- Weight: 3 oz.



Available Tone-On-Tone TressDimensional® Colors.

See page 22 for color swatches.

COLOR CODES

1	12R	24/102/R12	56/60/R8
1B/BURG	14/26/R10	27/25/88	60R
2/4R	613/1001/R18	27/30/33	88
4/6R	17/23/R8	33/130/R4	1001
8R	22R	38/51/60	
10R	223/23C	44/56/60	
10/130R	23R	52/38/49/R8	

Perfect

Picture Perfect

Product Code: MC1405

Color Shown: 14/26/R10 and 613/1001/R18

Sheer Comfort Mono Top/Lace Front Cap

Heat Friendly Style-Able Effortless™ Fiber

What is it?

Silky straight long layered bob (LOB) falls below the shoulders with a part anywhere collar length fringe. The silky Sheer Comfort Mono Top/Lace Front cap is designed with a double hand-tied knotting to deliver an undetectable hairline and provides all-day, everyday comfort.

Why is it different?

Special hand knotting and feathered layers for a high style LOB without the weight that is usually associated with longer wigs.

- Hair Length: 10"-14½"
- Fringe: 11"
- Crown: 14½"
- Nape: 10"
- Cap Size: 21½"
- Weight: 5.29 oz.



Available Tone-On-Tone TressDimensional® Colors.

See page 22 for color swatches.

COLOR CODES

1	12R	24/102/R12	44/56/60
1B/BURG	27/30/33H	52/38/49/R8	60R
2/4R	32/31	22R	1001
4/6R	33/30	24/18T	17/23/R8
747T	33R	223/23C	27/25/88
8R	10/130R	23R	33/130/R4
829	33/32/R4	88	56/60/R8
10R	14/26/R10	38/51/60	613/1001/R18

Amazing

Sheer Joy

Product Code: MC1410

Colors Shown: 56/60/R18 and 14/26/R10

Sheer Comfort Mono Top/Lace Front Cap

Heat Friendly Style-Able Effortless™ Fiber

What is it?

A low density silky layered bob with a very slight wave that falls just below the collar, that will part anywhere. Our Style-Able Effortless™ fiber matches the density of fine human hair and is double knotted by hand into a soft sheer monofilament lace mesh top and lace front for a realistic undetectable hairline for all day, every-day comfort.

Why is it different?

Our unique Sheer Comfort cap is specially crafted so the hair appears to be growing right out of your scalp and hairline. Hand layering allows for a low density of hair but full coverage without any bulk or weight usually associated with wigs.

- Hair Length: Overall 3" - 7½"
- Fringe: 5" - 6"
- Crown: 6½" - 7½"
- Nape: 7½"
- Cap Size: 21½"
- Weight: 3.3 oz.



Available Tone-On-Tone TressDimensional® Colors.

See page 22 for color swatches.

COLOR CODES

1	8R	223/23C	52/38/49/R8
1B/BURG	829	23R	56/60/R8
10R	10/130R	88	60R
12R	27/30/33H	14/26/R10	1001
2/4R	32/31	17/23/R8	27/25/88
24/18T	33R	24/102/R12	613/1001/R18
4/6R	33/30	33/130/R4	
6/28	33/32/R4	38/51/60	
747T	22R	44/56/60	



Glamorous

New Wave

Product Code: MC1403

Color Shown: 24/102/R12 and 4/6

Sheer Comfort Mono Top/Lace Front Cap

Heat Friendly Style-Able Effortless™ Fiber

What is it?

Longer mid-length layered shag with feathered bangs, a smooth silky top, and textured layers that fall below the collar. The Sheer Comfort Mono Top/Lace Front cap has a double hand-knotted soft monofilament mesh cap and an ear-to-ear lace front for an undetectable hairline.

Why is it different?

Multiple textured beach waves with contoured layering for a feathery lightweight feel but plenty of volume. The flowing sides perfectly frame the face or brush behind your ears.

- Hair Length: 3¼"-6"
- Fringe: 3¼"
- Crown: 5½"
- Nape 6"
- Cap Size: 21½"
- Weight: 2.71 oz.



Available Tone-On-Tone TressDimensional® Colors.

See page 22 for color swatches.

COLOR CODES

1B/BURG	10R	14/26/R10	23R	52/38/49/R8
2/4R	12R	24/102/R12	88	613/1001/R18
4/6R	27/30/33H	56/60/R8	38/51/60	33/130/R4
747T	32/31	22R	44/56/60	17/23/R8
8R	33/30	24/18T	60R	27/25/88
829	10/130R	223/23C	1001	

Spectacular

California Beach Waves

Product Code: MC1406

Color Shown: 14/26/R10 and 32/31

Sheer Comfort Mono Top/Lace Front Cap

Heat Friendly Style-Able Effortless™ Fiber

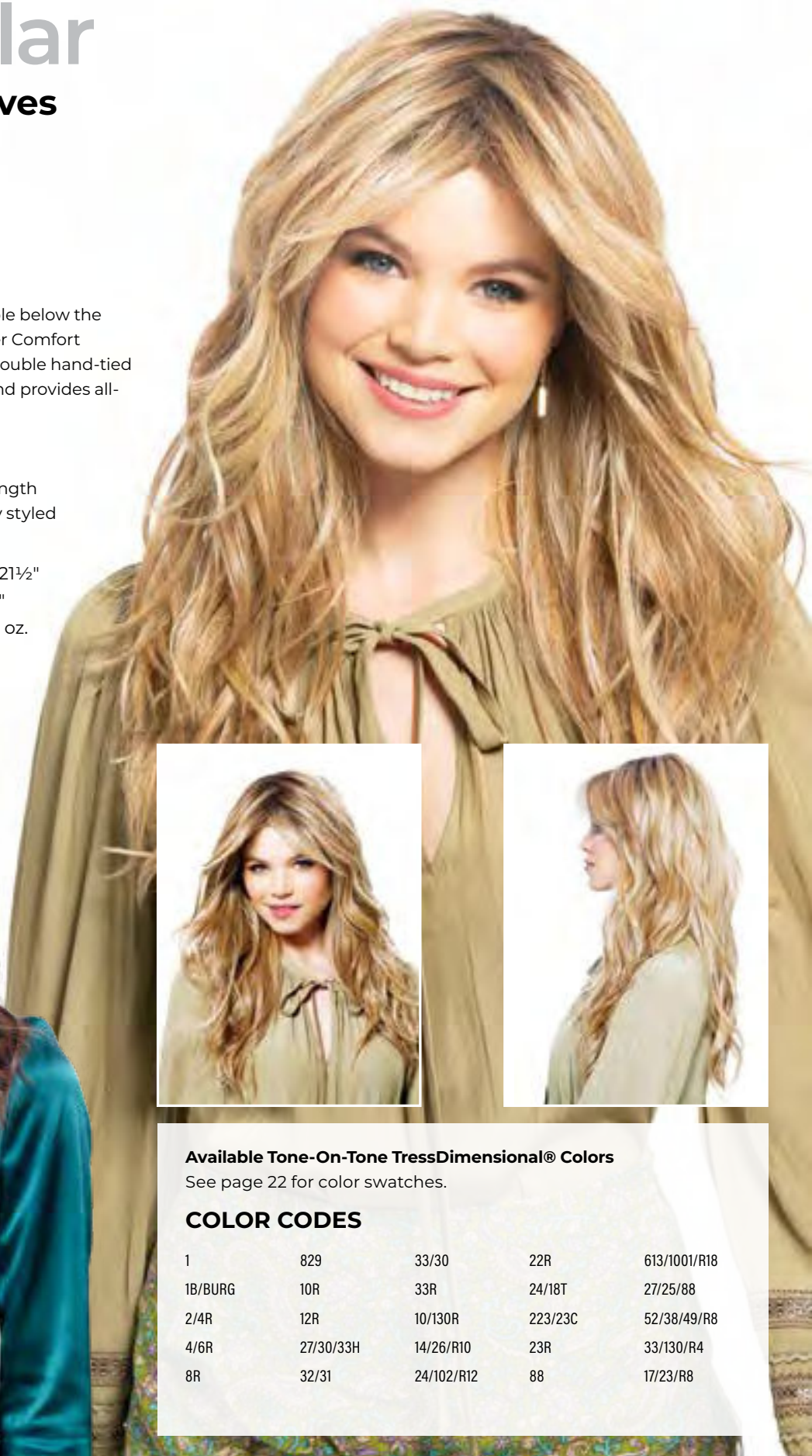
What is it?

Long layers of shaped beach waves that tumble below the shoulder with feathered bangs. The silky Sheer Comfort Mono Top/Lace Front cap is designed with a double hand-tied knotting to deliver an undetectable hairline and provides all-day, everyday comfort.

Why is it different?

Perfectly designed to part anywhere with a length that is easily managed and can be fashionably styled with feathered bangs.

- Hair Length: 5"-16"
- Nape: 6"
- Fringe: 5"
- Cap Size: 21½"
- Crown: 16"
- Weight: 6 oz.



Available Tone-On-Tone TressDimensional® Colors

See page 22 for color swatches.

COLOR CODES

1	829	33/30	22R	613/1001/R18
1B/BURG	10R	33R	24/18T	27/25/88
2/4R	12R	10/130R	223/23C	52/38/49/R8
4/6R	27/30/33H	14/26/R10	23R	33/130/R4
8R	32/31	24/102/R12	88	17/23/R8

TRESSDIMENSIONAL® COLOR CHART

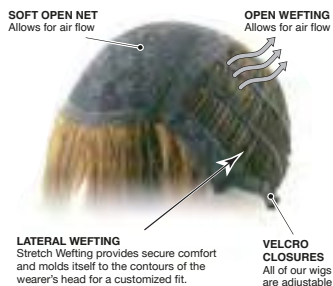
LOOK FABULOUS Heat Friendly Style-Able Effortless



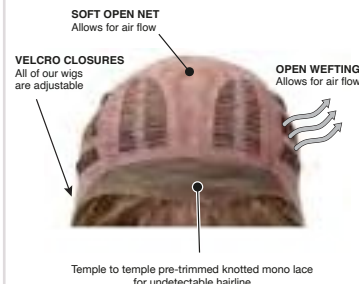
Classic Look Modacrylic Effortless



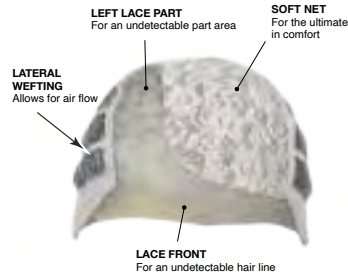
Cool Comfort Cap



Lace Front Cap



Sheer Lace Front Lace Part



Sheer Comfort Mono Top/Lace Front



MAKE WIGS COME ALIVE

CoolFlow
DUAL STYLER™

Patented technology for wigs. Code: TT3810

THE FIRST DUAL PURPOSE CURLING AND STRAIGHTENING IRON MADE SPECIFICALLY FOR WIGS AND EXTENSIONS.

- Patented technology cools hair or heat-friendly synthetics as you apply heat.
- Curls or straightens hair as low as 250° F (121° C).
- Cools hair in seconds. No pinning required for synthetic heat-friendly fibers.
- No more burning fingers.
- Auto shut-off.

WIG WAX

by **Tress Tech**™
FROM TRESSALLURE

Code: TT8304

IT'S GENIUS

The First Aerosol Spray Wax
CREATED JUST FOR WIGS

For more: lookfab.co/genius



TRESSALLURE
READY-TO-WEAR WIGS



Deep Cleansing Wig Shampoo

Item# TR8230

8oz. Clarifying Deep Cleansing shampoo is perfect for all synthetic and human hair wigs and hair extensions.

Wig Conditioner

Item# TR8206

8oz. deep moisturizing conditioner that revitalizes synthetic and human hair wigs for a soft, supple feel.

Finishing Mist Spray

Item# TR8212

8oz. light hold Finishing Mist is specially formulated to shape, style, and color protect your synthetic or human hair wig or hair extension.

For additional care products and accessories, please contact your Business Consultant at 800-327-5555.



LOOK FABULOUS

WIGS AND EXTENSIONS® FROM  **TRESSALLURE®**

TressAllure® is a brand of
Hair Visions International
5200 NW 33rd Avenue
Suite 100
Fort Lauderdale, FL 33309
800-327-5555
www.HairVisionsIntl.com

Follow TressAllure:

YouTube: lookfab.co/youtube

FaceBook: lookfab.co/FB

Twitter: [@TressAllureWigs](https://twitter.com/TressAllureWigs)

Pinterest: pinterest.com/TressAllureWigs

Instagram: [@TressAllureWigs](https://www.instagram.com/TressAllureWigs)

CATALOG-LOOKFABV3 | 2M | 0123